

# PARCEL MAP 8468

EASEMENT PLAN

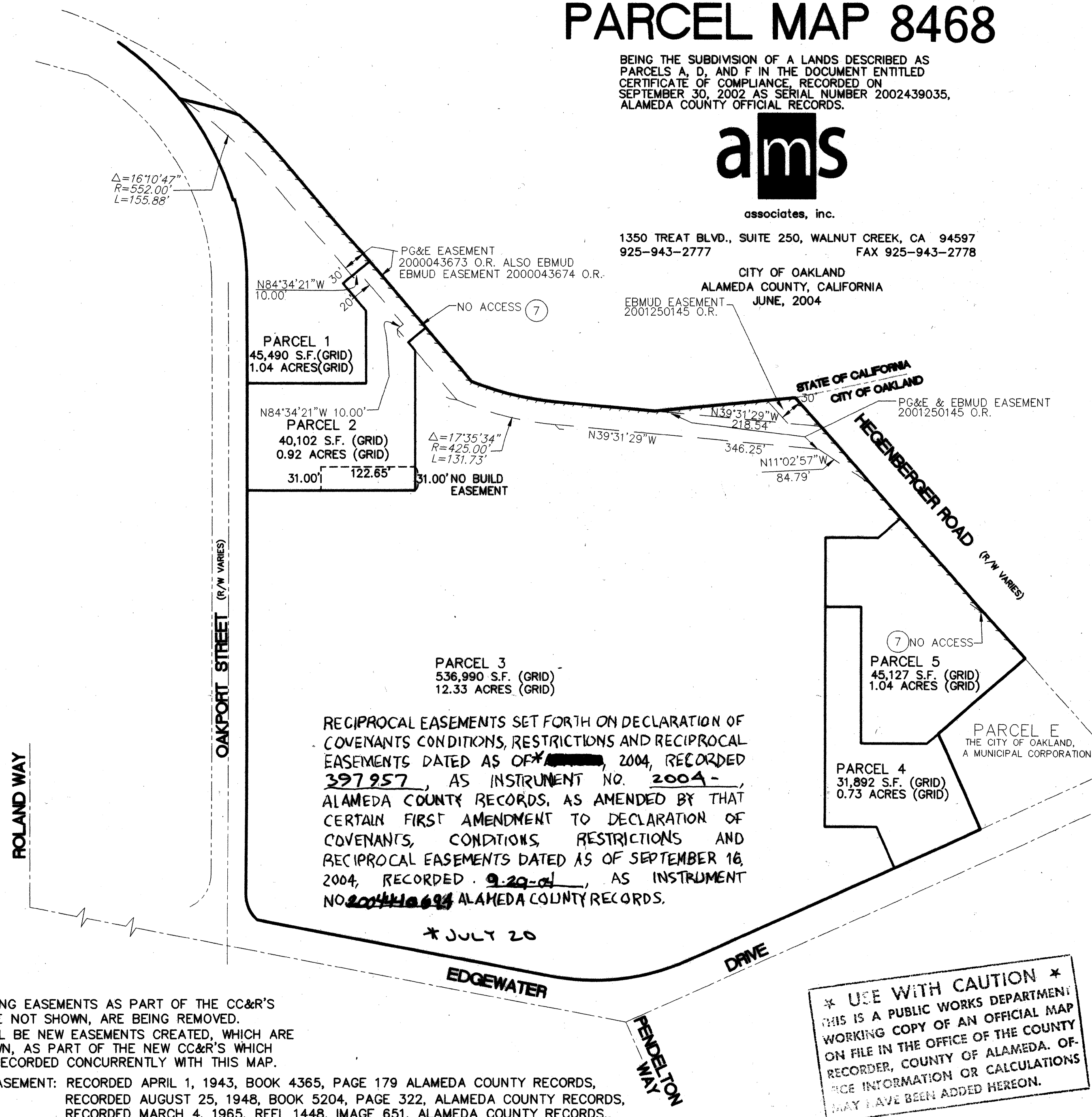
BEING THE SUBDIVISION OF A LANDS DESCRIBED AS  
PARCELS A, D, AND F IN THE DOCUMENT ENTITLED  
CERTIFICATE OF COMPLIANCE, RECORDED ON  
SEPTEMBER 30, 2002 AS SERIAL NUMBER 2002439035,  
ALAMEDA COUNTY OFFICIAL RECORDS.

**ams**

associates, inc.

1350 TREAT BLVD., SUITE 250, WALNUT CREEK, CA 94597  
925-943-2777 FAX 925-943-2778

CITY OF OAKLAND  
ALAMEDA COUNTY, CALIFORNIA  
JUNE, 2004



## NOTES:

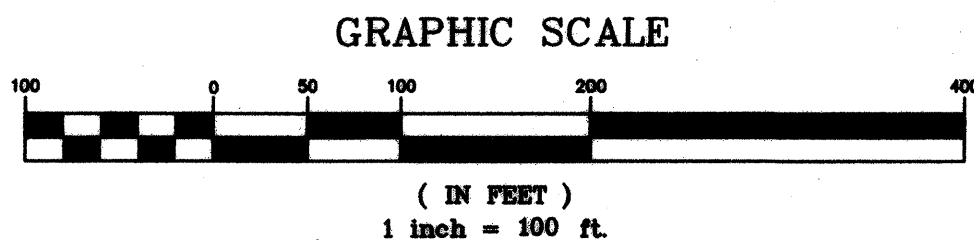
1. THE EXISTING EASEMENTS AS PART OF THE CC&R'S WHICH ARE NOT SHOWN, ARE BEING REMOVED.
2. THERE WILL BE NEW EASEMENTS CREATED, WHICH ARE NOT SHOWN, AS PART OF THE NEW CC&R'S WHICH WILL BE RECORDED CONCURRENTLY WITH THIS MAP.

- (7) ACCESS EASEMENT: RECORDED APRIL 1, 1943, BOOK 4365, PAGE 179 ALAMEDA COUNTY RECORDS,  
RECORDED AUGUST 25, 1948, BOOK 5204, PAGE 322, ALAMEDA COUNTY RECORDS,  
RECORDED MARCH 4, 1965, REEL 1448, IMAGE 651, ALAMEDA COUNTY RECORDS,  
RECORDED FEBRUARY 9, 2000, INSTRUMENT NO. 2000-043670, ALAMEDA COUNTY RECORDS,  
RECORDED FEBRUARY 9, 2000, INSTRUMENT NO. 2000-043671, ALAMEDA COUNTY RECORDS,  
RECORDED APRIL 13, 2002, INSTRUMENT NO. 2002-390145, ALAMEDA COUNTY RECORDS,  
RECORDED SEPTEMBER 30, 2002, INSTRUMENT NO. 2002-439035, ALAMEDA COUNTY RECORDS,

**\* USE WITH CAUTION \***  
THIS IS A PUBLIC WORKS DEPARTMENT  
WORKING COPY OF AN OFFICIAL MAP  
ON FILE IN THE OFFICE OF THE COUNTY  
RECORDER, COUNTY OF ALAMEDA. OF-  
FICE INFORMATION OR CALCULATIONS  
MAY HAVE BEEN ADDED HEREON.

## LEGEND

BOUNDARY OF MAP	_____
EXISTING PARCEL LINE	_____
PARCEL LINE (CREATED BY THIS MAP)	_____
EASEMENT (CREATED BY THIS MAP)	_____
EXISTING EASEMENT	_____
MONUMENT LINE	_____
MONUMENT	●
TOTAL	(T)



SHEET 3 OF 3

NOV 17 2004

FILED 9-29-04

278/23

Parcel MAP 8468

MAP BK 278

Pg. 23