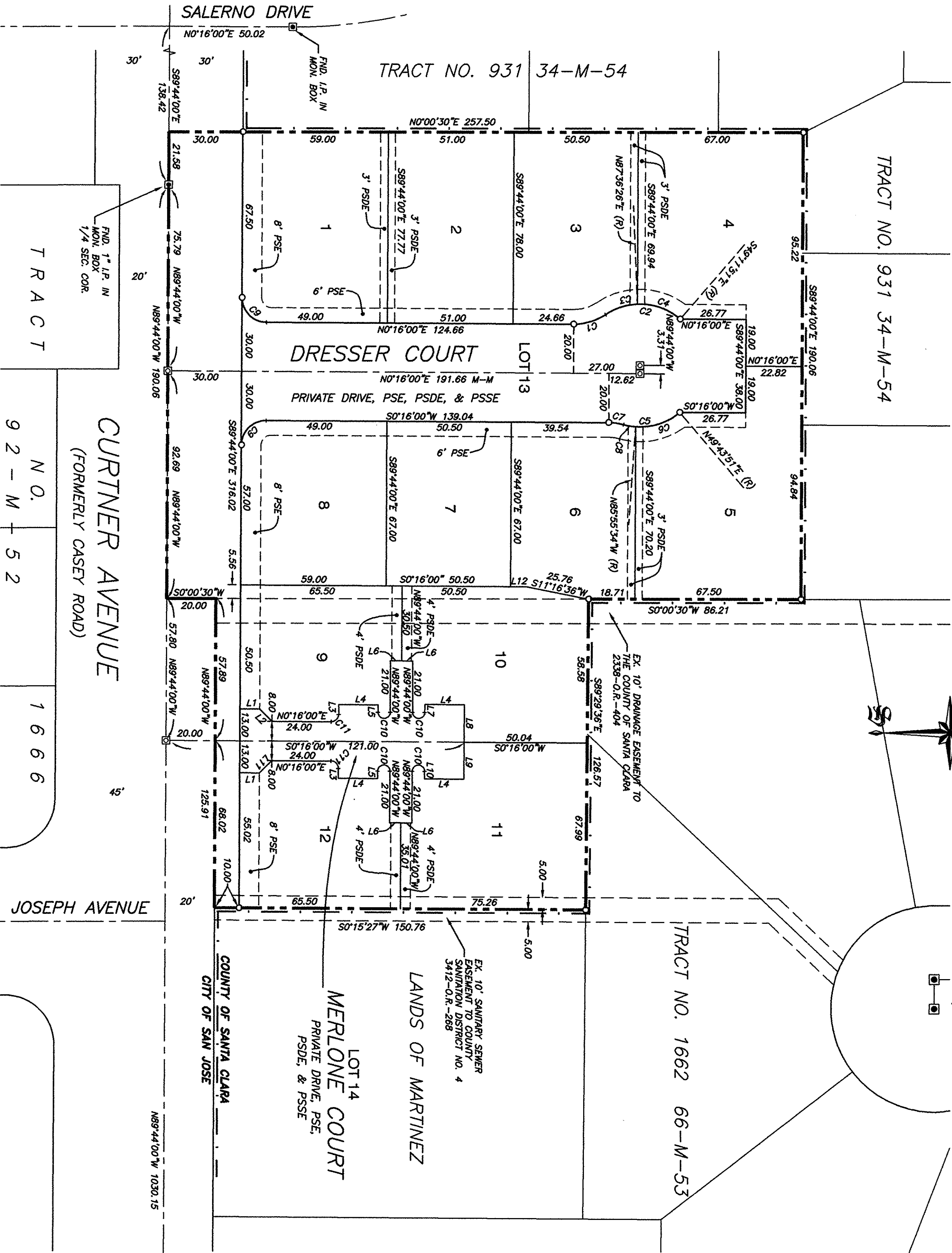


LINE TABLE		
NO.	BEARING	LENGTH
L1	N 0°16'00" E	8.00
L2	N 45°16'00" E	7.07
L3	N 89°44'00" W	4.01
L4	N 0°16'00" E	16.00
L5	S 89°44'00" E	3.01
L6	S 0°16'00" W	4.50
L7	N 89°44'00" W	3.27
L8	S 89°44'00" E	13.27
L9	S 89°44'00" E	15.00
L10	N 89°44'00" W	3.00
L11	N 44°44'00" W	7.07
L12	S 0°16'00" W	6.50

CURVE TABLE			
NO.	DELTA	RADIUS	LENGTH
C1	34°17'26"	23.00	13.74
C2	74°48'34"	25.00	32.62
C3	31°33'51"	25.00	13.77
C4	43°11'43"	25.00	18.65
C5	55°46'44"	25.00	24.34
C6	44°20'35"	25.00	19.35
C7	15°14'35"	23.00	6.12
C8	17°28'09"	23.00	4.99
C9	90°00'00"	10.00	15.71
C10	180°00'00"	2.50	7.85
C11	90°00'00"	3.00	4.71



TRACT NO. 931 34-M-54

CURTNER AVENUE
(FORMERLY CASEY ROAD)

JOSEPH AVENUE

STONEHURST WAY

TRACT NO. 9358

CONSISTING OF TWO (2) SHEETS
BEING A PORTION OF SECTION 35, TOWNSHIP 7 SOUTH, RANGE
1 WEST, M.D.B. & M. AND LYING WITHIN THE CITY OF SAN JOSE,
COUNTY OF SANTA CLARA, CALIFORNIA

Charles W. Davidson Esq.
A CALIFORNIA CORPORATION
CONSULTING CIVIL ENGINEERS
255 W. JULIAN STREET, SUITE 200, SAN JOSE, CALIFORNIA
SEPTEMBER 2001, SCALE: 1" = 30'

BASIS OF BEARINGS:
THE BEARING (S89°44'00"E) OF THE CENTERLINE OF CURTNER AVENUE AS SHOWN ON THAT CERTAIN MAP OF TRACT NO. 8365 RECORDED IN BOOK 299 OF MAPS AT PAGE 37, SANTA CLARA COUNTY RECORDS, AS FOUND MONUMENTED, WAS USED AS THE BASIS OF BEARINGS SHOWN ON THIS MAP.

NOTES:
• DISTANCES AND DIMENSIONS ARE SHOWN IN FEET AND DECIMALS THEREOF.
• THE DISTINCTIVE BORDER LINE DENOTES THE BOUNDARY OF THE SUBDIVISION.
• THE AREA WITHIN THE DISTINCTIVE BORDER IS 1.561 ACRES, MORE OR LESS.

SOILS REPORT
A GEOTECHNICAL REPORT WAS PREPARED FOR THE PROPERTY BY ROMING ENGINEERS, INC. DATED JANUARY 23, 2001, A COPY OF WHICH HAS BEEN FILED IN THE OFFICE OF THE CITY CLERK OF THE CITY OF SAN JOSE.

- LEGEND**
- SET 3/4" IRON PIPE OR OTHER PERMANENT MARKER AS INDICATED TAGGED "RCE 14218" OR AS NOTED
 - FOUND 3/4" IRON PIPE TAGGED "RCE 14218" OR AS NOTED
 - SET STANDARD CSJ MON. (MON. BOX WITH BRASS DISK STAMPED "RCE 14218")
 - FOUND STANDARD CSJ MON. (MON. BOX WITH BRASS DISK STAMPED "RCE 14218" OR AS NOTED)
 - DISTINCTIVE BORDER LINE
 - CITY LIMIT LINE
 - PROPERTY LINE
 - EASEMENT LINE
 - PUBLIC SERVICE EASEMENT
 - PSE
 - PSDE
 - PRIVATE STORM DRAINAGE EASEMENT
 - PSSE
 - PRIVATE SANITARY SEWER EASEMENT
 - M-M
 - MONUMENT TO MONUMENT