

MONO COUNTY, CALIFORNIA

MAY, 1972

48 LOTS & LOTS "A" & "B"

WILLIAMSON & SCHMID
CIVIL ENGINEERS

GERALD F. OLDENBURG, L.S. 3246

5.338 ACRES

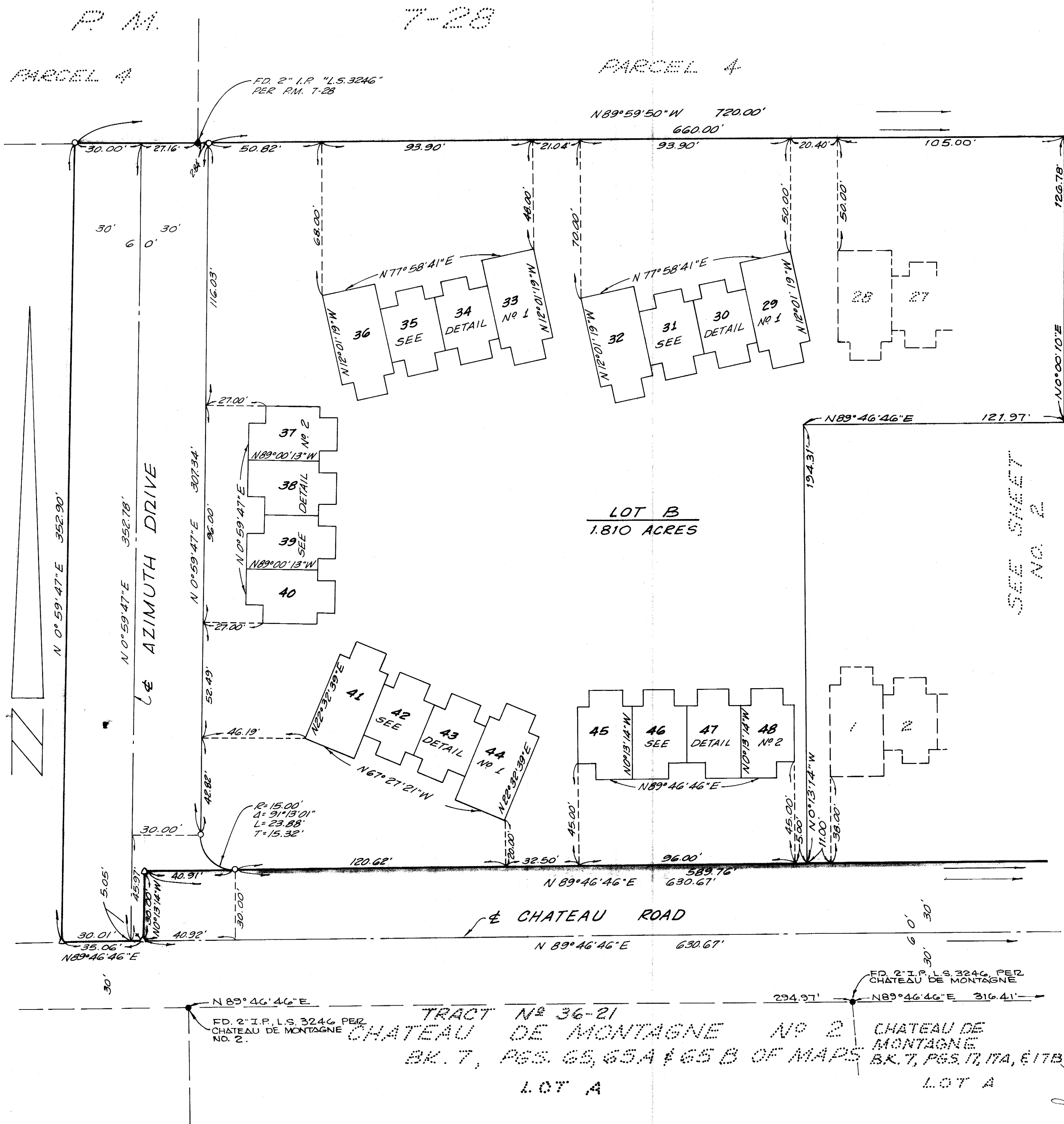
3.874 ACRES OF COMMON AREA (LOTS A & B).

NOTE :

1. THE DIMENSIONS SHOWN ON THE DETAILS ON SHEET 2 ARE TYPICAL OF ALL BUILDING LOTS. BEARINGS FOR EACH BUILDING LOT ARE SHOWN ON MAP.
2. LINES OF ALL BUILDING LOTS SHOWN HEREON INTERSECT AT RIGHT ANGLES.
3. ALL TIE DISTANCES FROM LETTERED LOT LINES TO BUILDING LOTS ARE AT RIGHT ANGLES FROM SAID LETTERED LOT LINES.

SEE SHEET 2 FOR BASIS OF BEARINGS AND
MONUMENT NOTES.

SEE SHEET 2 FOR DETAILS OF TYPICAL BUILDING LOTS.



Vol. 8 pg. 19-B