

INTRODUCTION TO ICT

1. Which of the following is described as a processed data?
 - A. Date
 - B. Information
 - C. ICT tool
 - D. Technology
2. Which of the following is not used to address large audience?
 - A. Wrist Watch
 - B. Microphone
 - C. Projector
 - D. PA system
3. The devices used to communicate information are called
 - A. Technologies
 - B. ICT tools
 - C. ICT
 - D. Communication
4. The application of science and engineering to invent machines is termed
 - A. Information
 - B. Communication
 - C. Technology
 - D. ICT tools
5. One of the following devices produces hard copy information?
 - A. Monitor
 - B. Speaker
 - C. Projector
 - D. Printer
6. The device that converts computer output into displayed images is the
 - a. Hard disk
 - b. Monitor
 - c. Printer
 - d. Processor
7. Processed or transformed facts which are meaning to the user is called
 - a. Data
 - b. Information
 - c. Input
 - d. Output
8. The total number of keys on a standard QWERTY is keyboard is
 - a. 96
 - b. 108
 - c. 104
 - d. 116
9. During typing lesson , computer users are supposed to used
 - a. 5 fingers
 - b. 6 fingers
 - c. 8 fingers
 - d. 10 fingers
10. In the absence of a mouse, which of the following devices could be used to perform its functions?
 - a. Scanner
 - b. Webcam
 - c. Keyboard
 - d. Microphones
11. The first key on the computer keyboard is
 - a. Caps locks
 - b. Delete
 - c. Enter
 - d. Esc
12. The flat pane screen is also known as
 - a. LCD
 - b. VCD
 - c. CRT
 - d. OCR
13. A raw material is processed into information is called
 - a. Data
 - b. Raw information
 - c. Information technology
 - d. Information processing
14. Which of the following key is not a function key on the keyboard
 - a. F1
 - b. F2
 - c. F9
 - d. F13
15. Data and information can be put into any of these form except
 - a. Sound
 - b. Picture
 - c. Knowledge
 - d. Text
16. The computer hardware is divided into_____main group
 - a. 5
 - b. 4
 - c. 3
 - d. 2

17. The can be _____ buttons on a mouse
- 2
 - 6
 - 5
 - 4

THE INTERNET

18. The world wide web is another name for the internet, the largest network in the world
- True
 - False
19. If you have connected to the internet, you are :
- Online
 - Outline
 - Offline
 - All the above
20. The protocol for downloading files carries the abbreviation
- HTTP
 - FTP
 - ISP
 - URL
21. The first browser was called
- Internet Explorer
 - FTp
 - Morozillafirefox
 - All the above
22. Which of the following is an example of e-mail service
- www.google.com
 - Isaac@gmail.com
 - Bob Smith @yahoo.com
 - markmensah@yahoo.com
23. LAN simply means
- Local Authority Network
 - Line Area Network
 - Local Area Network
 - Line Authority Network
24. Transferring files from a local computer to the internet is known as
- Downloading
 - Downlinking
 - Uplinking
 - Uploading
25. The button which is used to cancel the loading of a web page in a web browser is called
- Reloading button
 - Stop button
 - Back button
 - Forward button
26. To sign up an e-mail account means

- To access an e-mail account
- (B) To copy an e-mail account
- To create an e-mail account
- (D) To edit an e-mail account

27. After checking your mails and read all received e-mails, one has to the account before leaving the computer
- Sign In
 - Sign up
 - Sign Out
 - e-mail
28. is the process of typing your entire e-mail message in capital letters
- Spam
 - Shouting
 - Flame
 - Flame war
29. An unwanted and unasked for e-mail, often an advertisement that is sent through the internet to many people is called
- Spam
 - Flame
 - Netiquette
 - Flame War
30. E-mail connotes a way of composing an electronically account that enables a user to communicate over the internet by sending, storing and messages.
- Texting
 - Burning
 - Receiving
 - Writing

GRAPHIC USER INTERFACE

31. Which icon on the desktop stores deleted file?
- My Document
 - My Folder
 - My Computer
 - Recycle Bin
32. To 'restore' a window means
- Return it to its original size
 - Drop it onto the taskbar

- c. Copy it and paste it
 - d. Expand it to fill the desktop
33. The small window that pops up with instructions or command for an end user to perform a specific task is known as
- a. Menu box
 - b. Control box
 - c. Dialogue box
 - d. Notification area
34. The icon on the desktop that represents the program which is used to access the internet is known as
- a. Internet verifier
 - b. Internet explorer
 - c. Internet searcher
 - d. My computer
35. What name is given to the small pictures on the computer screen that represent files, folders or programs?
- a. Taskbar
 - b. Desktop
 - c. Start menu
 - d. Icons
36. A folder which is kept in another folder is known as
- a. Super folder
 - b. Junk folder
 - c. Sub-folder
 - d. Second folder
37. Which bar on the computer displays the name of the running application and the name of the document or file in an application window?
- a. Taskbar
 - b. Control box
 - c. Window title
 - d. Dialogue box
38. The icon on the desktop that allows end users to have access to all disk drives in the computer system is known as
- a. My drives
 - b. Recycle bin
 - c. My computer
 - d. My document
39. To 'maximize' a window means to
- a. Return it to its original size
 - b. Expand it to fill the desktop
 - c. Fill it to capacity
 - d. Fill it to the taskbar
40. The band across the top of a window on a computer screen that displays the name of the document and application is known as
- a. Task bar
 - b. Title bar
 - c. Control bar
 - d. Desktop bar
41. What is used to organize files and document on the computer?
- a. Folder
 - b. System tray
 - c. Control box
 - d. Dialogue box
42. What other name can be given to the monitor?
- a. Display unit
 - b. Micro processor
 - c. CPU
 - d. Screen

HEALTH AND SAFETY IN USING I.C.T. TOOLS

43. An example of ICT tool is
- a. Mobile phone
 - b. Pen
 - c. Chalk
 - d. System tray
44. Why is the calculator considered as an ICT tool? Because
- a. It stores information
 - b. It is used to access information
 - c. It is used to display information
 - d. It process data to produce information.
45. Which ICT tool is used to talk to a large number of audience?
- a. Mobile phone
 - b. P. A. system
 - c. Computer
 - d. Television
46. Which health hazard is associated with prolong use of mobile phone?

- a. Wrist pain
- b. Waist pain
- c. Headache
- d. Cancer

47. Which health hazard may come as a result of long exposure of television?

- a. Back pain
- b. Hand pain
- c. Headache
- d. Hearing impairment

48. A long term exposure to the public address system can affect the

- a. Mind
- b. Ear
- c. Eye
- d. Waist

49. What ICT tool can affect your vision when exposed to for a long period of time?

- a. Television
- b. Radio
- c. Mobile phone
- d. P.A. system

ETHIC OF USING I.C.T. TOOLS

50. Copyright was mainly designed to

- a. Protect the works of people
- b. Control the works of people
- c. Promote the work of people
- d. Provide criminal sanctions

51. A computer virus is

- a. A software used in banking
- b. A software that runs media files
- c. A harmful software that has the ability to infect a computer and cause damage to the information stored on the computer.
- d. A hardware unit

52. The software which is designed to detect or find and remove viruses from computer is known as

- a. Antigens
- b. Antibiotics

- c. Antivirus
- d. Antibodies

53. On which year was the first real copyright act established?

- a. 1710
- b. 1810
- c. 1910
- d. 2010

54. One source of computer virus is

- a. Internet
- b. Monitor
- c. System unit
- d. Keyboard

55. One effect of virus on the computer is

- a. It corrupt the files on the computer
- b. It makes the computer completely hot
- c. It makes the computer fast
- d. It makes the computer boot faster

INTRODUCTION TO ICT

56. In the classification of computers, personal computer such as notebooks and personal digital assistances (PDA) are examples of

- a. Super computers
- b. Mainframe computers
- c. Micro computers
- d. Mini computers

57. The internal permanent store of memory which can be read but cannot normally be changed is the

- a. ALU
- b. CAD
- c. RAM
- d. ROM

58. The external hardware devices connected to the system unit are known as

- a. Connections
- b. Cables
- c. Peripherals
- d. Wires

59. Which device is termed as the brain of the computer?

- a. The processor
- b. The hard disk
- c. The control unit
- d. The memory

60. What computer device is used to produce hard copies of information?

- a. Monitor
- b. Speaker
- c. Projector
- d. Printer

61. What does ROM stands for?

- a. Read only memory
- b. Random only memory
- c. Read off memory
- d. Random off memory

LABE THE DIAGRAMS BELOW



A



B



C



D



E



F



G



H



I



J



K



L



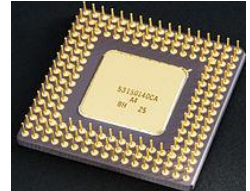
M



N



O



P

Study the diagrams below and answer the questions that follow them.



1) a) What is the name of the diagram above?

..... (1 mark)

b) Write names of the parts labelled A-E

A.....

B.....

C.....

D.....

E.....

(1 mark each)

c) Which alignment button is active on the diagram above?

.....(2 marks).



d) What is the name of the above image?

..... (1 marks)

c) Write down the names labeled A-D.

A.....

B.....

C.....

D..... (1 mark each).