

LEGEND & NOTES

P.S.D.E.	PRIVATE STORM DRAIN EASMENT
P.U.E.	PUBLIC UTILITY EASEMENT
L.E.	LANDSCAPE EASEMENT
S.S.E.	SANITARY SEWER EASEMENT
M-M	MONUMENT TO MONUMENT
□	FOUND CITY STD. MONUMENT
□	STD. CITY MONUMENT TO BE SET
○	3/4" IRON PIPE SET
●	FOUND 3/4" IRON PIPE
---	EASEMENT LINE
---	EXTERIOR BOUNDARY LINE
---	CENTER LINE
---	PROPOSED LOT LINE

- ALL DISTANCES SHOWN HEREON ARE IN FEET & DECIMALS THEREOF
- THE AREA WITHIN THE DISTICTIVE BORDER IS 33.724 ACRES
- BUILDING SETBACK LINES TO BE PER CITY OF FREMONT ZONING ORDINANCE.

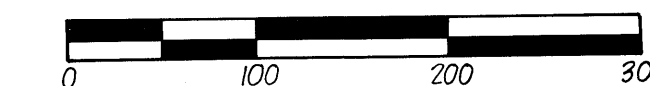
PARCEL MAP NO. 4116

CITY OF FREMONT
ALAMEDA COUNTY CALIFORNIA
SCALE: 1"=100'
DATE: SEPT. 1983

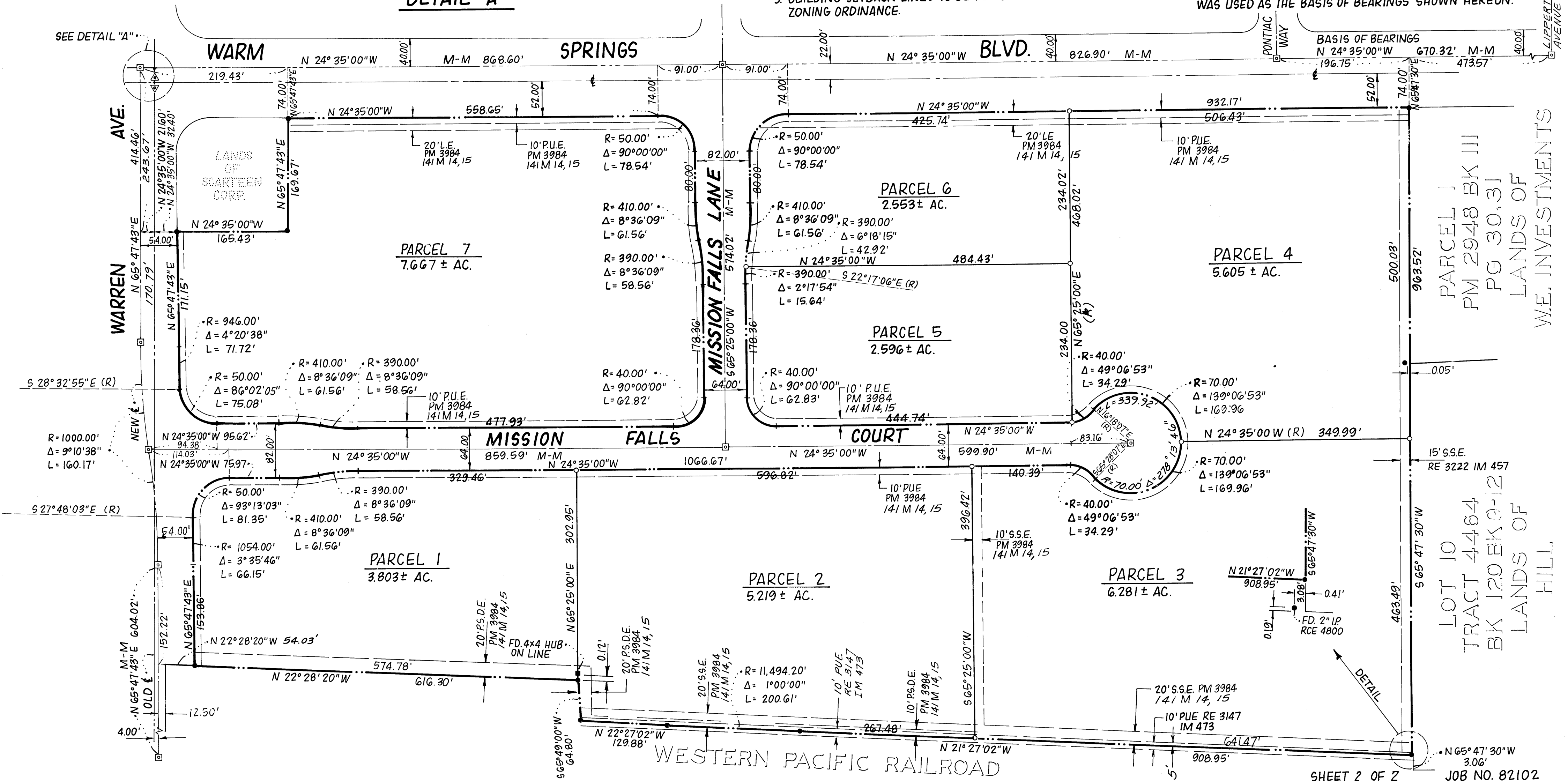
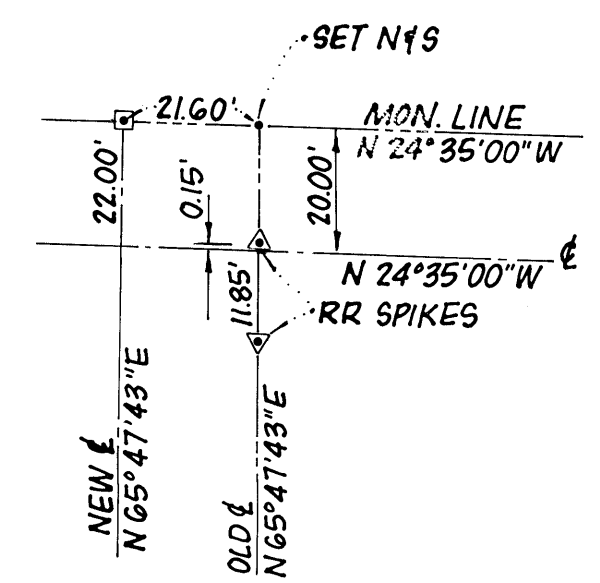
KIER & WRIGHT
CIVIL ENGINEERS & SURVEYORS
SANTA CLARA, CALIFORNIA

BASIS OF BEARINGS

THE BEARING N 24°35'00"W OF THE MONUMENT LINE OF WARM SPRINGS BLVD. AS SHOWN ON THE MAP OF TRACT 3827, RECORDED IN BOOK 96 OF MAPS, PAGES 89,90 ALAMEDA COUNTY RECORDS WAS USED AS THE BASIS OF BEARINGS SHOWN HEREON.



DETAIL "A"



Filed 9-23-83

141/13

MAP BOOK 141 PAGE 19