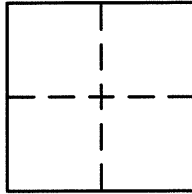


BK 61 PG 63**CORNER RECORD**Document Number CR 6475City of San LorenzoCounty of Alameda, CaliforniaBrief Legal Description Street Monument on Grant Avenue at the intersection with Bockman Road.**CORNER TYPE**

Government Corner ☐ Control ☐
 Meander ☐ Property ☐
 Rancho ☐ Other ☒
 Date of Survey April 21, 2014

COORDINATES (Optional)

N. _____
 E. _____
 Zone _____ NAD27 ☐ NAD83 ☐
 NAD83 Epoch _____
 Elev. _____
 Vert. Datum: NGVD29 ☐ NAVD88 ☐
 Meas. Units: Metric ☐ Imperial ☐
 U.S. Survey Feet ☐

Corner - Left as found ☒ Found and tagged ☐ Established ☐ Reestablished ☐ Rebuilt ☐

Identification and type of corner found: Evidence used to identify or procedure used to establish or reestablish the corner:

- ⊙ Found Bronze Nipple Disk stamped "Grant-Boc 1957" in monument well at intersection of monument line
Grant Avenue with the centerline of Bockman Road as shown on map of Tract 1670 filed in book 37 at page 47.
 In compliance with Section 8771 of the Professional Land Surveyor's Act, this corner record is being filed to
 ESTABLISH the position of an existing monument upon completion of roadway construction.

A description of the physical condition of the monument as found and as set or reset:

- ⊙ Found Bronze Nipple Disk stamped "Grant-Boc 1957" in monument well in good condition.
 ● Set Mag Nail and Tag tagged PLS 8121 as ties to street monument as shown on page 2.

SURVEYOR'S STATEMENT

This Corner Record was prepared by me or under my direction in conformance with
 the Land Surveyor's Act on August 15, 2014.

Signed Gerry Hammond P.L.S. or R.C.E. No. 8166
 Gerry Hammond
 Kier & Wright Civil Engineers & Surveyors, Inc., Livermore, CA
COUNTY SURVEYOR'S STATEMENT

This Corner Record was received 9-8-14

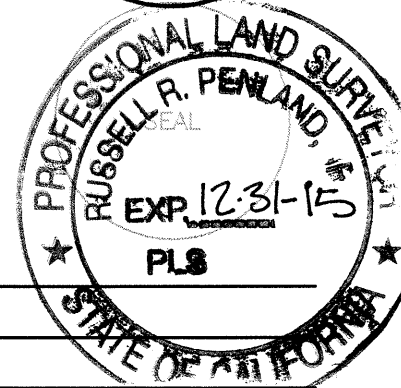
and examined and filed 9-24-14

Signed Russell R. Penland P.L.S. or R.C.E. No. 5726

Title COUNTY SURVEYOR

County Surveyor's Comment _____

SPEC. 2156



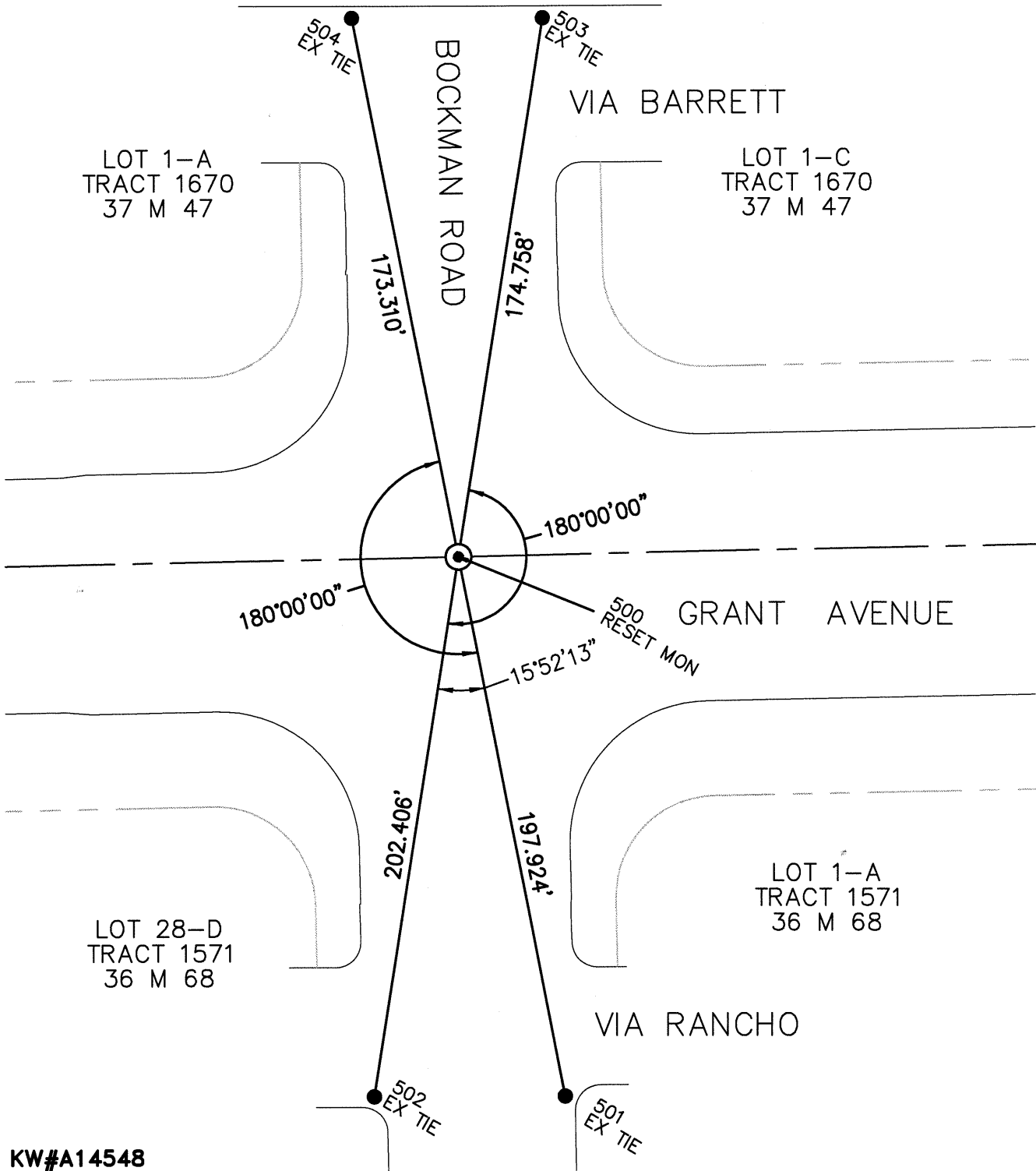
WNG467

Z:\2014\A14548\survey\A14548-CR.dwg 9/2/2014 10:55:52 AM PDT

- ⊙ FOUND BRONZE NIPPLE DISK STAMPED
"GRANT-BOC 1957" IN MONUMENT WELL AT
INTERSECTION OF MONUMENT LINE GRANT AVE
WITH THE CENTERLINE OF BOCKMAN ROAD.



NOT TO SCALE



KW#A14548