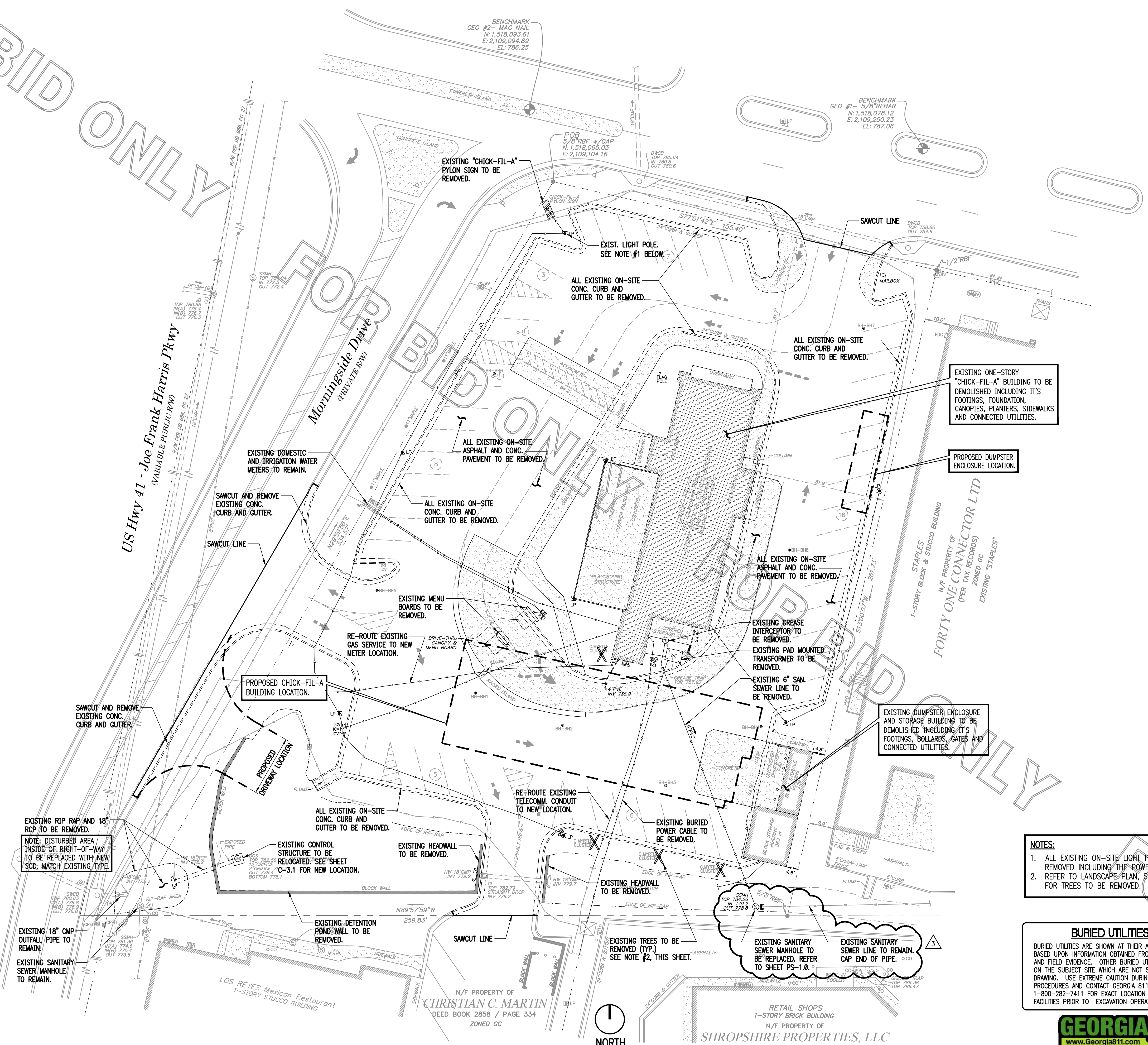


FOR BID ONLY



DEMOLITION NOTES

1. PRIOR TO COMMENCEMENT OF DEMOLITION THE CONTRACTOR WILL COORDINATE HIS ACTIVITIES WITH ALL THE UTILITY COMPANIES SERVING THIS AREA. CONTRACTOR IS TO COORDINATE FULLY WITH UTILITY COMPANIES ON EXACT LOCATION OF UNDERGROUND UTILITIES PRIOR TO EXCAVATION.
2. THE CONTRACTOR IS TO COMPLETELY REMOVE AND DISPOSE OF ALL STRUCTURES AND BUILDINGS THAT ARE SO INDICATED INCLUDING FOUNDATIONS, TIMBER AND BRUSH, EXCEPT AS OTHERWISE INDICATED; STUMPS AND ROOTS; EXISTING PAVEMENT; OTHER STRUCTURES AS SHOWN OR REASONABLY IMPLIED IN THE DRAWINGS.
3. EXCEPT IN AREAS WHERE EXISTING TREES SHALL BE PRESERVED, A MINIMUM DEPTH OF REMOVAL SHALL BE (2) FOOT BELOW SUBGRADE IN ROADWAY AREAS AND TO ORIGINAL SOILS ELSEWHERE. WHERE EXISTING BUILDINGS ARE TO BE DEMOLISHED, ALL TRACES OF FOUNDATIONS AND UNDERGROUND UTILITIES ARE TO BE REMOVED (UNLESS OTHERWISE NOTED ON PLANS). THE CONTRACTOR IS RESPONSIBLE FOR PROPER DISPOSAL OF ALL WASTE MATERIAL.
4. WHERE PAVING OR STRUCTURES ARE TO BE REMOVED WHICH ABUT OR ARE A PART OF CONNECTED FACILITIES (THAT ARE OFF-SITE), RESTORATION OF ANY DAMAGE THAT MIGHT RESULT FROM DEMOLITION IS TO BE RESTORED TO A CONDITION EQUAL TO OR BETTER THAN EXISTING UNLESS SPECIFICALLY EXEMPTED BY THE PLANS. THE COST FOR SUCH RESTORATION SHALL BE INCIDENTAL TO OTHER CONSTRUCTION AND NO EXTRA COMPENSATION WILL BE ALLOWED.
5. THE LOCATION OF ALL EXISTING UTILITIES, STORM DRAINAGE AND TREES SHOWN ON THE PLANS HAVE BEEN DETERMINED FROM AVAILABLE INFORMATION AND IS GIVEN FOR THE CONVENIENCE OF THE CONTRACTOR. THE OWNER OR ENGINEER ASSUMES NO RESPONSIBILITY FOR ACCURACY. PRIOR TO THE START OF DEMOLITION THE CONTRACTOR SHALL VISIT THE SITE AND DETERMINE THE EXISTENCE & LOCATION OF ALL STRUCTURES, UTILITIES & TREES SHOWN OR NOT ON THE PLANS, WHICH WOULD NEED TO BE REMOVED OR PRESERVED.
6. THE CONTRACTOR IS TO COORDINATE THE RELOCATION OR REMOVAL OF ALL OVERHEAD/UNDERGROUND UTILITIES, UTILITY POLES, LIGHTS AND LINES IN THE RIGHT-OF-WAY AND ON THE PROPERTY WITH THE APPROPRIATE SERVICE PROVIDER.
7. THE CONTRACTOR SHALL REFERENCE AND RESTORE PROPERTY CORNERS AND LAND MARKERS DISTURBED DURING CONSTRUCTION. (UNDER THE DIRECTION OF A STATE REGISTERED LAND SURVEYOR).



Chick-fil-A
5200 Buffington Road
Atlanta, Georgia 30349-2998

INTERPLAN

ARCHITECTURE
ENGINEERING
INTERIOR DESIGN
PROJECT MANAGEMENT

604 COURTLAND STREET
SUITE 100
ORLANDO, FLORIDA 32804
PH 407.645.5008
FX 407.629.9124

SEAL:
THIS DOCUMENT IS NOT FOR CONSTRUCTION
UNLESS THE ARCHITECT OR ENGINEER'S
SIGNATURE AND SEAL APPEAR BELOW.

STUART ANDERSON, P.E.
GA. REG.# PE038342

CHICK-FIL-A
SAR Cherokee Place FSR
115 CHEROKEE PLACE
CARTERSVILLE, GEORGIA 30121

FSR# 00534

REVISION SCHEDULE		
NO.	DATE	DESCRIPTION
3	02/20/18	CITY COMMENTS

CONSULTANT PROJECT #	2017.0149
PRINTED FOR	Permit
DATE	11/2017
DRAWN BY	
CHECKED BY	

Information contained on this drawing and in all digital files produced for above named project may not be reproduced in any manner without express written or verbal consent from authorized project representatives.

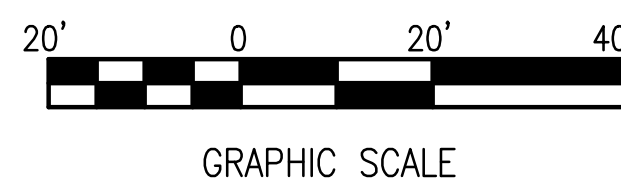
SHEET
DEMOLITION PLAN

SHEET NUMBER

C-1.2

DEMOLITION PLAN

1" = 20'



NORTH

- NOTES:
1. ALL EXISTING ON-SITE LIGHT POLES TO BE REMOVED INCLUDING THE POWER WIRES.
 2. REFER TO LANDSCAPE PLAN, SHEET L-1.0 FOR TREES TO BE REMOVED.

BURIED UTILITIES NOTE
BURIED UTILITIES ARE SHOWN AT THEIR APPROXIMATE LOCATION BASED UPON INFORMATION OBTAINED FROM UTILITY COMPANIES AND FIELD EVIDENCE. OTHER BURIED UTILITIES MIGHT EXIST ON THE SUBJECT SITE WHICH ARE NOT SHOWN ON THIS DRAWING. USE EXTREME CAUTION DURING EXCAVATION PROCEDURES AND CONTACT GEORGIA 811, DIAL 811 OR 1-800-282-7411 FOR EXACT LOCATION OF BURIED FACILITIES PRIOR TO EXCAVATION OPERATIONS.



NOTE:
NOTIFY UTILITY COMPANY 72 HOURS BEFORE DIGGING