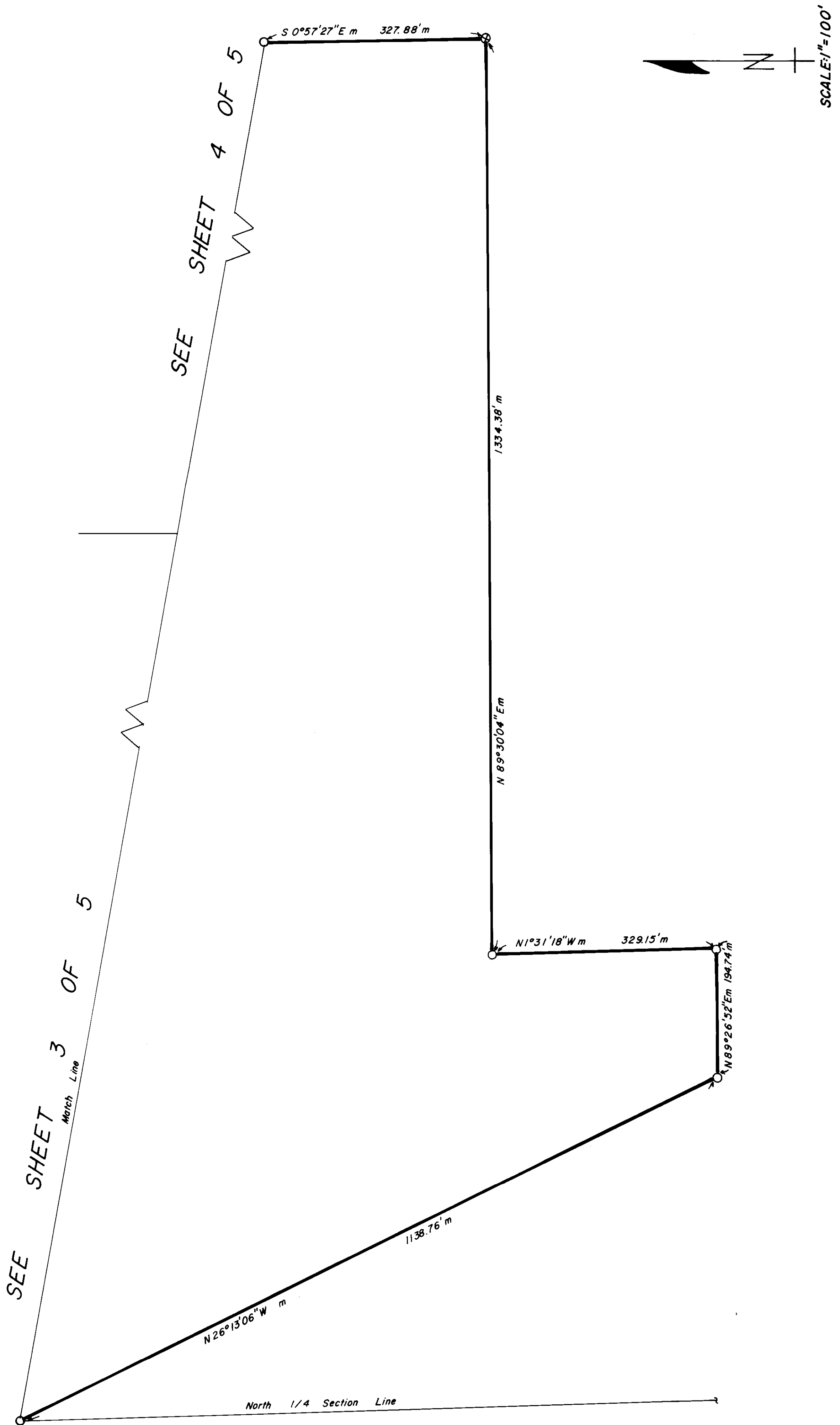


RECORD OF SURVEY NO. 34-12

SHEET 5 OF 5

IN PORTIONS OF THE NE 1/4 OF SEC 13, THE SE 1/4 OF SEC 12, T2N,
R25E, & THE SW 1/4 OF SEC 7, T2N, R26E, MDB&M, MONO COUNTY, CALIFORNIA



R/S Vol 1 Page 68-D