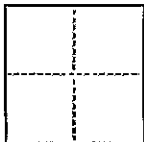


## CORNER RECORD

CR 153

COUNTY OF \_\_\_\_\_ T. 1 S R. 3 W Mt. Diablo MERIDIAN CALIFORNIACORNER TYPE: GOV'T. CORNER ☐ MEANDER ☐ RANCHO ☐ CONTROL ☐ OTHER ☐CORNER IDENTIFICATION — DATE OF VISIT April 16, 19 92CORNER — LEFT AS FOUND ☒ FOUND AND TAGGED ☐ REESTABLISHED OBLITERATED CORNER ☐ REBUILT ☐

PHYSICAL DESCRIPTION OF CORNER FOUND; EVIDENCE AND METHOD USED TO IDENTIFY OR REESTABLISH

Found standard City of Oakland monument as shown on Tract 4080 (112 M 47).

PHYSICAL DESCRIPTION OF MONUMENTS REBUILT OR PERPETUATED

Set 3/4" I.P. and Tag RCE 22485 at the corners and angle points on Lots 2 and 5, Tract 4080 (112 M 47) as shown below.

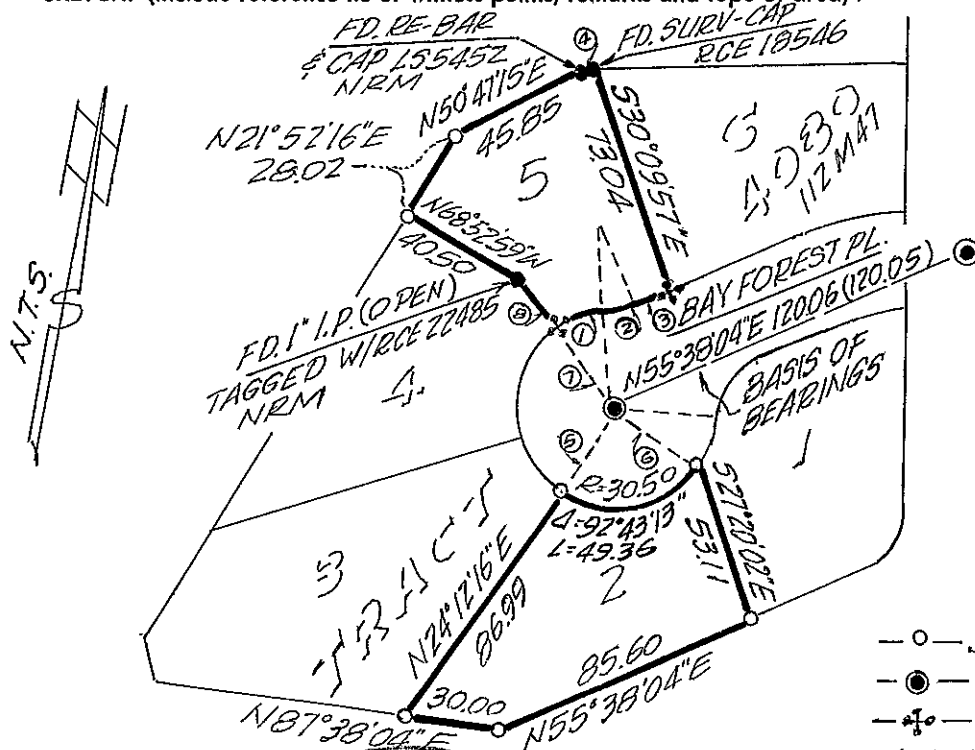
CALIFORNIA COORDINATE SYSTEM ORDER: FIRST ☐ SECOND ☐ THIRD ☐

STATIONS USED: NGS (USC & GS) ☐ STATE ☐ COUNTY ☐ OTHER ☐ STATION \_\_\_\_\_ STATION \_\_\_\_\_

ZONE III ELEVATION \_\_\_\_\_ NORTHINGS (Y) \_\_\_\_\_ EASTINGS (X) \_\_\_\_\_

(Fold)

SKETCH: (Include reference tie or witness points, remarks and topo of area).

CURVE DATA  
& COURSES

- ① R=30.50 Δ=34°44'35" L=18.49
- ② R=20 Δ=20°17'59" L=7.09
- ③ N55°38'04"E. 13.51
- ④ N78°36'52"E. 2.64
- ⑤ N23°09'52"E(R) 30.50
- ⑥ S69°33'21"E(R) 30.50
- ⑦ N48°48'32"W(R) 30.50
- ⑧ N47°38'13"W. 19.42

## LEGEND

- SET 3/4" I.P. W/TAG RCE 22485
- FOUND CITY MONUMENT
- ✕— CUT CROSS IN CONCRETE
- NRM - NO RECORD OF MONUMENT

THIS CORNER RECORD WAS PREPARED BY ME OR UNDER MY DIRECTION IN CONFORMANCE WITH THE LAND SURVEYORS ACT ON AUGUST 12, 19 92

SIGNED: RCE 22485L.S. or R.C.E. No. RCE 22485

SURVEYOR'S CERTIFICATE

No. 22485

CIVIL

STATE OF CALIFORNIA

EXP. 9-30-93

COUNTY SURVEYOR'S CERTIFICATE

THE CORNER RECORD WAS RECEIVED May 14 19 92  
AND EXAMINED AND FOUND TRUE 19 92

FILE: 112 M 47  
COUNTY SURVEYOR

DOCUMENT No. 92-37  
STATEMENT ON BACK OF SHEET

YES ☐ NO ☒