

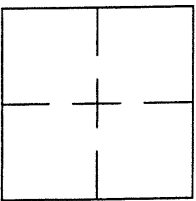
CORNER RECORD

Document Number CR 6929

City of OAKLAND

County of ALAMEDA, California

Brief Legal Description WELL MONUMENT LOCATED WITHIN THE INTERSECTION OF CASTRO STREET AND 6TH STREET



CORNER RECORD

Government Corner ☐ Control ☒
 Meander ☐ Property ☐
 Rancho ☐ Other ☐
 Date of Survey 09/23/2014

COORDINATES
(Optional)

N. _____
 E. _____
 Zone _____ Datum _____
 Elev. _____

Corner — Left as found ☒ Found and tagged ☐ Established ☐ Reestablished ☐ Rebuilt ☐

Identification and type of corner found: Evidence used to identify or procedure used to establish or reestablish the corner:
FOUND PIN IN WELL MONUMENT.

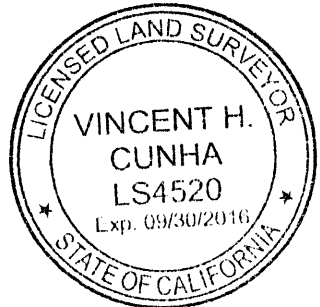
AS SHOWN ON CITY OF OAKLAND MONUMENT MAP, PAGE 202.
NO CITY MONUMENT DESIGNATION NUMBER AT SUBJECT LOCATION
THIS POINT WAS REFERENCED PRIOR TO A CONSTRUCTION PROJECT IN THE VICINITY.

A description of the physical condition of the monument as found and as set or reset:
FOUND AND SET POINTS AS SHOWN ON PAGE 2.

THESE TIES ARE FOR THE PURPOSE OF PERPETUATING THE FOUND MONUMENTATION.
NO CLAIM IS MADE AS TO THE RELATIONSHIP OF THE POINTS OR LINES SHOWN HEREON
TO TRUE BOUNDARY LOCATIONS.

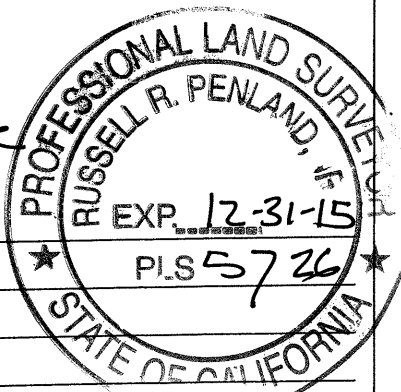
SURVEYOR'S STATEMENT

This Corner Record was prepared by me or under my direction in conformance with
 the Land Surveyors' Act on OCTOBER 17, 2014.
 Signed Vincent H. Cunha L.S. Number LS 4520
VINCENT H. CUNHA



COUNTY SURVEYOR'S STATEMENT

This Corner Record was received 1-12-2015 and examined
 and filed 12-28-2015
 Signed [Signature] Title County Surveyor



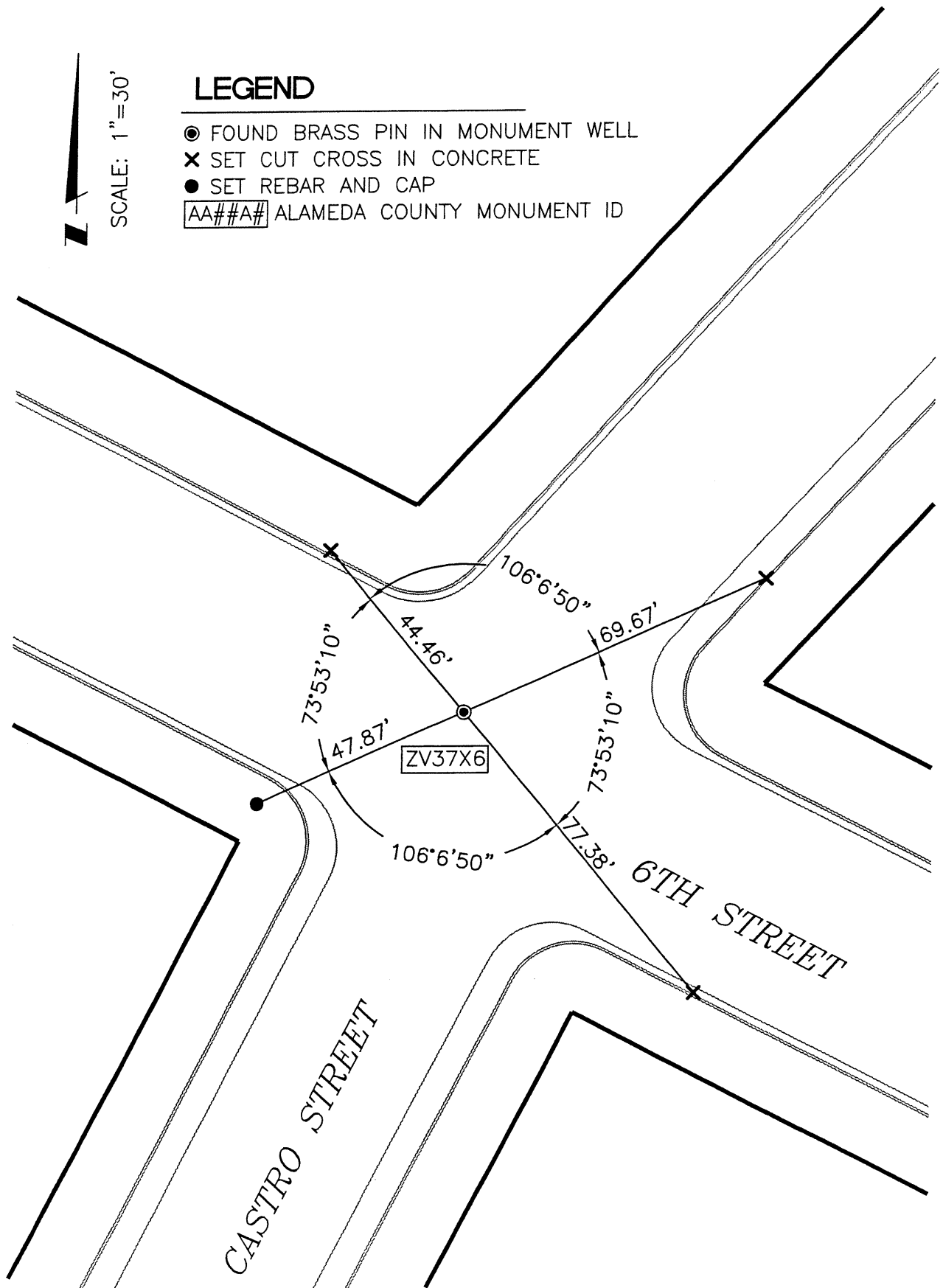
County Surveyor's Comment _____



SCALE: 1"=30'

LEGEND

- FOUND BRASS PIN IN MONUMENT WELL
- ✕ SET CUT CROSS IN CONCRETE
- SET REBAR AND CAP
- AA##A# ALAMEDA COUNTY MONUMENT ID



214127-Castro-CR2