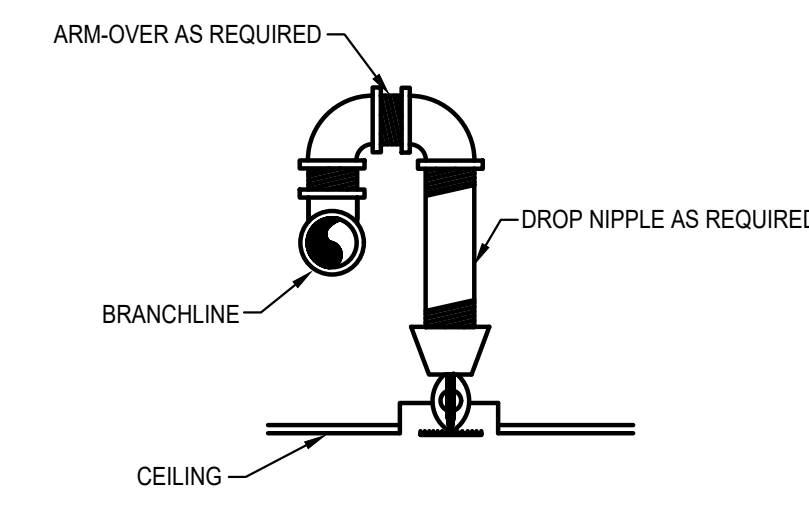


NOTE:
SPARE SPRINKLER HEAD QUANTITY SHALL BE
IN ACCORDANCE WITH NFPA 13.3-11.

SPARE SPRINKLER HEAD BOX DETAIL

SCALE: NONE



TYPICAL SWING JOINT DETAIL

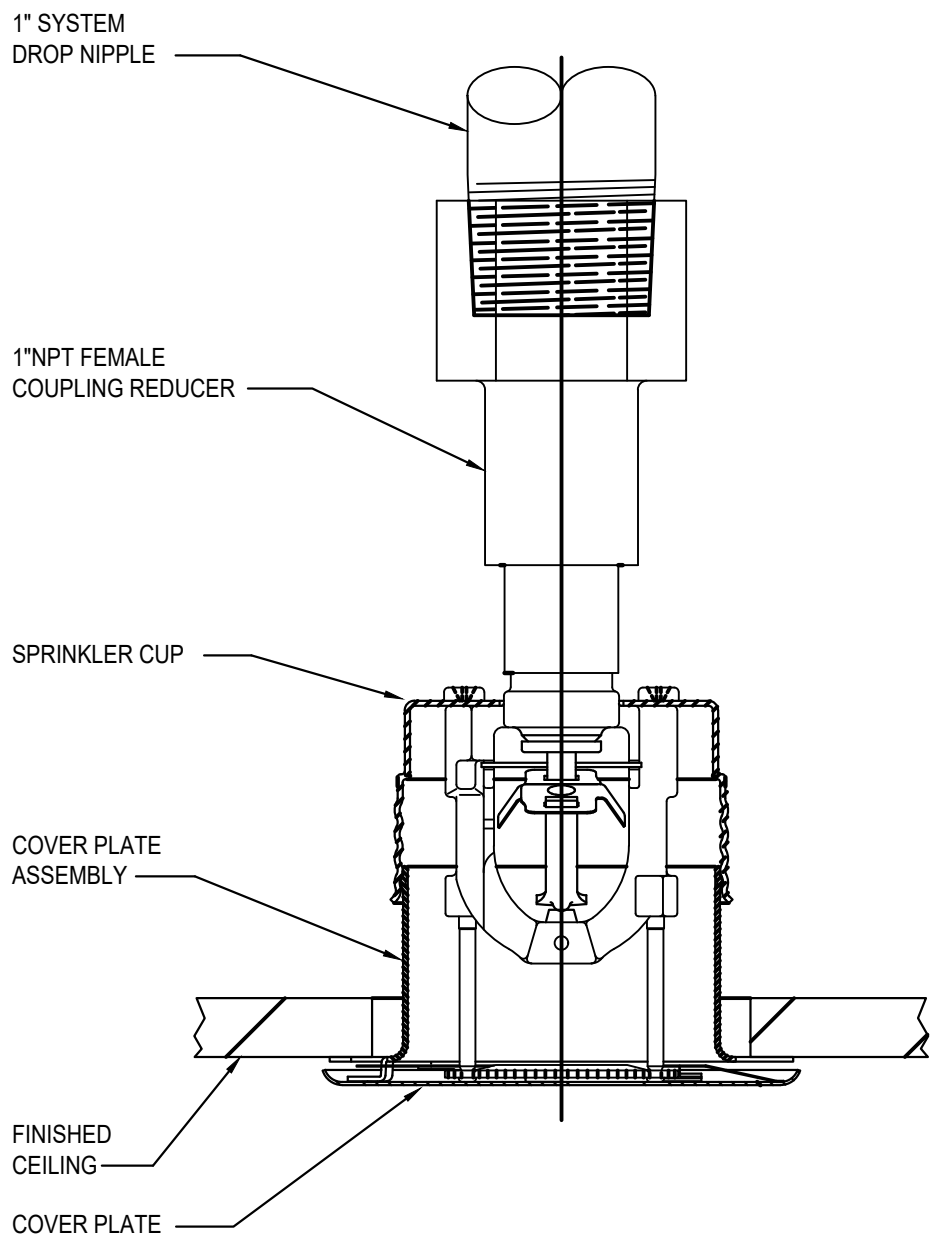
SCALE: NONE

FIRE PROTECTION KEY NOTES:

- 1

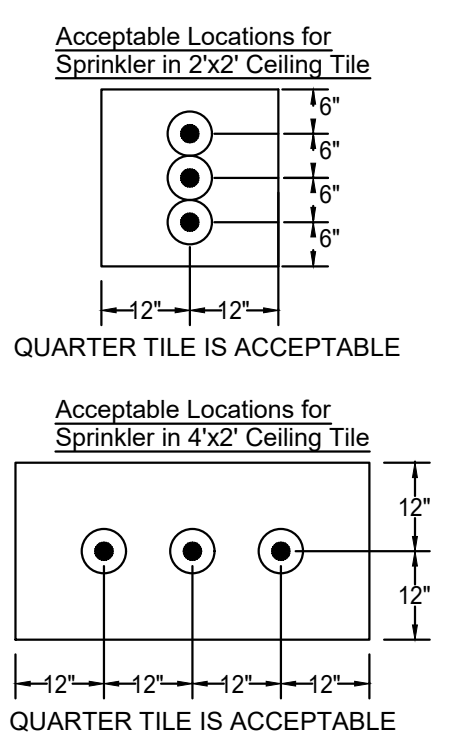
PROVIDE WITH DRY PENDANT TYPE SPRINKLER IN FREEZER AND COOLER AREAS.
- 2

MODIFY SPRINKLER HEADS FROM UPRIGHT TO CEILING MOUNTED AS REQUIRED TO MATCH NEW CEILING TYPE. SPRINKLER HEADS TO BE RECESSED TYPE. TYPICAL FOR ALL.



TYPICAL CONCEALED PENDENT SPRINKLER HEAD DETAIL

SCALE: NONE



SPRINKLER HEAD TILE LAYOUT DETAIL

SCALE: NONE



PANDA RESTAURANT GROUP INC.
1683 Walnut Grove Ave.
Rosemead, California
91770
Telephone: 626.799.9898
Facsimile: 626.372.8288

All ideas, designs, arrangement and plans indicated or represented by this drawing are the property of Panda Express Inc. and were created for use on this specific project. None of these ideas, designs, arrangements or plans may be used by or disclosed to any person, firm, or corporation without the written permission of Panda Express Inc.

REVISIONS:


| | |
|--|--|
| | |
| | |
| | |
| | |
| | |
| | |
| | |
| | |

ISSUE DATE:

| | | |
|---|------------|----------|
| 1 | CHECK SET | 10-23-20 |
| 2 | PERMIT SET | 03-15-21 |
| 3 | BID SET | 04-02-21 |

DRAWN BY: JAD

PANDA PROJECT #: S4-21-D7864
ARCH PROJECT #: P7350



Plans Prepared By
CPI Design, Inc.
500 West Fulton St.
Sanford, FL 32771
Ph: 407.322.6841

State of Virginia License:
Engineer No. 407006317
Surveyor No. N/A
Architect No. 407006317
Landscape No. 407006317

www.cphcorp.com
A Full Service
A & E Firm

PANDA EXPRESS
END CAP - TENANT BUILD OUT
4501 S LABURNUM AVE
RICHMOND VA, 23231

F-100

FIRE PROTECTION FLOOR PLAN