

CORNER RECORD

Document Number

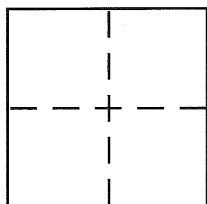
BK 30 Pg 75
CR 3455

City of OAKLAND

County of ALAMEDA

, California

Brief Legal Description TELEGRAPH AVENUE AT WILLIAM STREET



CORNER TYPE

Government Corner ☐ Control ☐
Meander ☐ Property ☐
Rancho ☐ Other ☒
Date of Survey 8/14/2008

COORDINATES (Optional)

N. _____
E. _____
Zone _____ NAD27 ☐ NAD83 ☐
NAD83 Epoch _____
Elev. _____
Vert. Datum: NGVD29 ☐ NAVD88 ☐
Meas. Units: Metric ☐ Imperial ☐

Corner - Left as found ☒ Found and tagged ☐ Established ☐ Reestablished ☐ Rebuilt ☐

Identification and type of corner found: Evidence used to identify or procedure used to establish or reestablish the corner:
FOUND BRASS PIN MONUMENT IN MONUMENT WELL ON TELEGRAPH AVENUE

AT WILLIAM STREET. THE MONUMENT WAS TIED OUT WITH LOCAL STRADDLERS

PRIOR TO CONSTRUCTION. SEE PLOT ON REVERSE

A description of the physical condition of the monument as found and as set or reset: _____

SET LOCAL STRADDLERS, CUT CROSS IN SIDEWALK, FOR THE FOUND

MONUMENT SHOWN ON REVERSE.

SURVEYOR'S STATEMENT

This Corner Record was prepared by me or under my direction in conformance with
the Land Surveyor's Act on AUGUST 19 2008

Signed [Signature] P.L.S or R.C.E. No. LS 6884

COUNTY SURVEYOR'S STATEMENT

This Corner Record was received 8-22-08

and examined and filed 9-15-08

Signed [Signature] P.L.S or R.C.E. No. 5726

Title COUNTY SURVEYOR

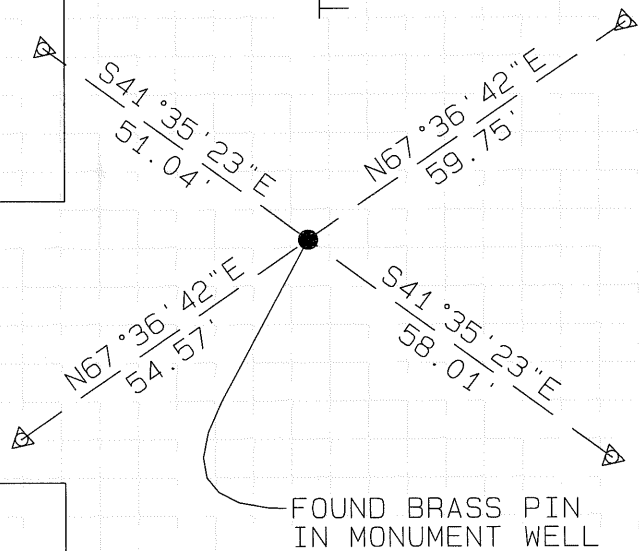
County Surveyor's Comment _____





TELEGRAPH AVENUE

WILLIAM STREET



- FOUND MONUMENT AS NOTED
- SET LOCAL STRADDLER,
- △ CUT CROSS IN WALK,
- UNLESS OTHERWISE NOTED

SCALE: 1"=30'
AUGUST 19, 2008